



PROJECTS CATALOG



SCAN FOR OUR
PRODUCTS & PROJECTS



Nilüfer Organize Sanayi Bölgesi
N.118 Sokak. No:10
Nilüfer/BURSA/TÜRKİYE



Phone: +90(224)411 15 50
Fax : +90(224)411 15 54

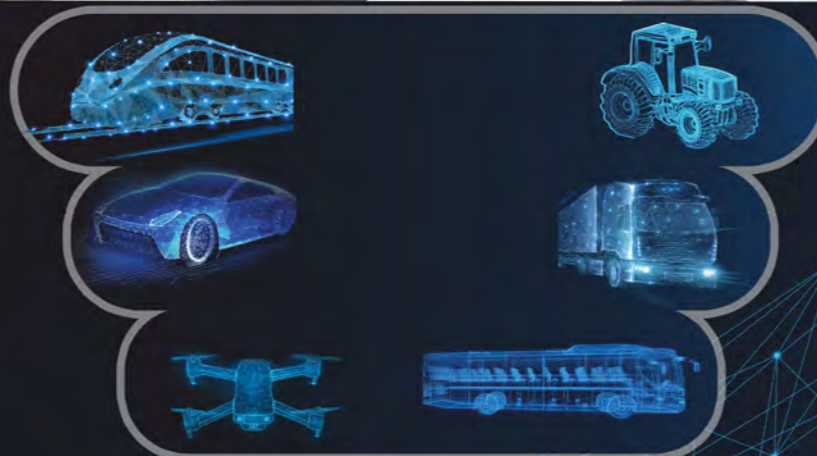


E-Mail: etka@etkaotomotiv.com

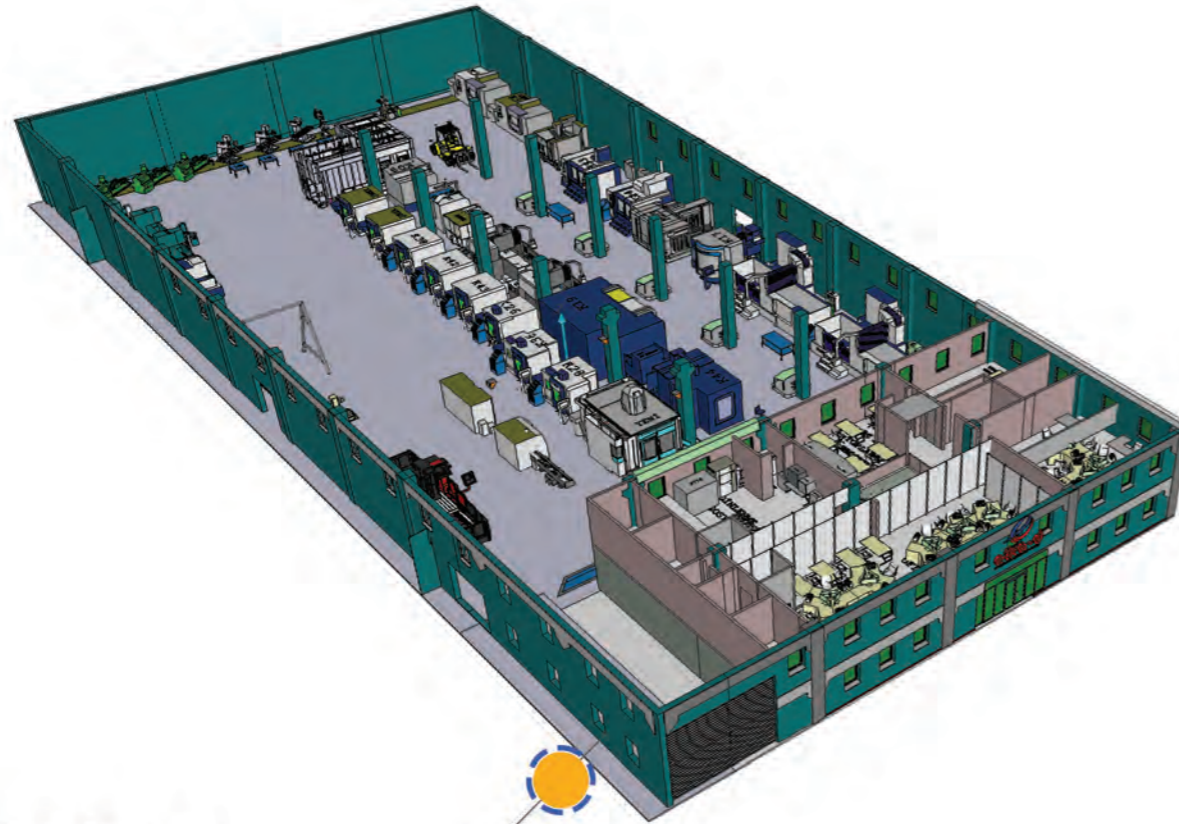


www.etkaotomotiv.com

Copyright© 2022 Etka-d Automotive, Plastic, Mould Co.Ltd. All Rights Reserved



etka-d
mould & plastic
"together to the future"

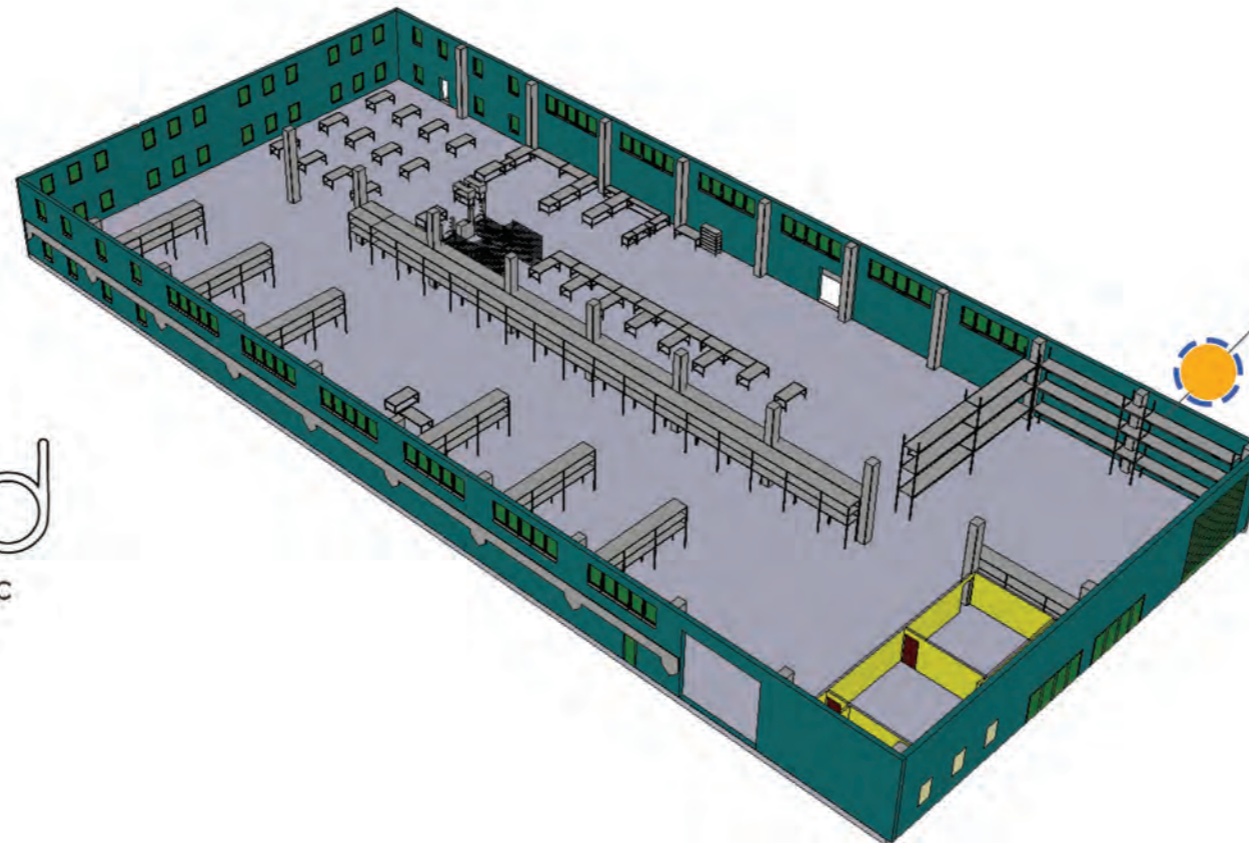
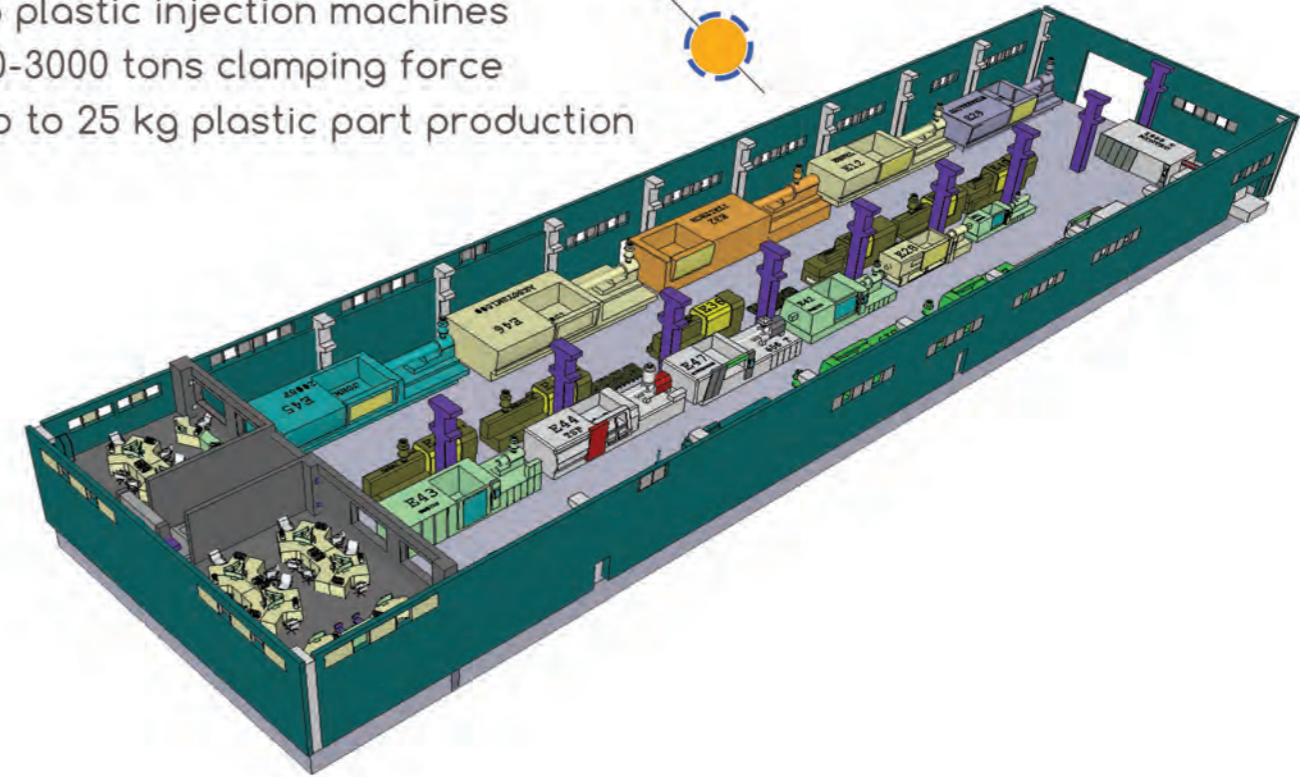


Mold Factory

- 4000 m2 area
- 40 CNC machines
- Up to 2000 mm 5 axis machining capability

Plastic Injection Factory

- 5000 m2 area
- 55 plastic injection machines
- 60-3000 tons clamping force
- Up to 25 kg plastic part production

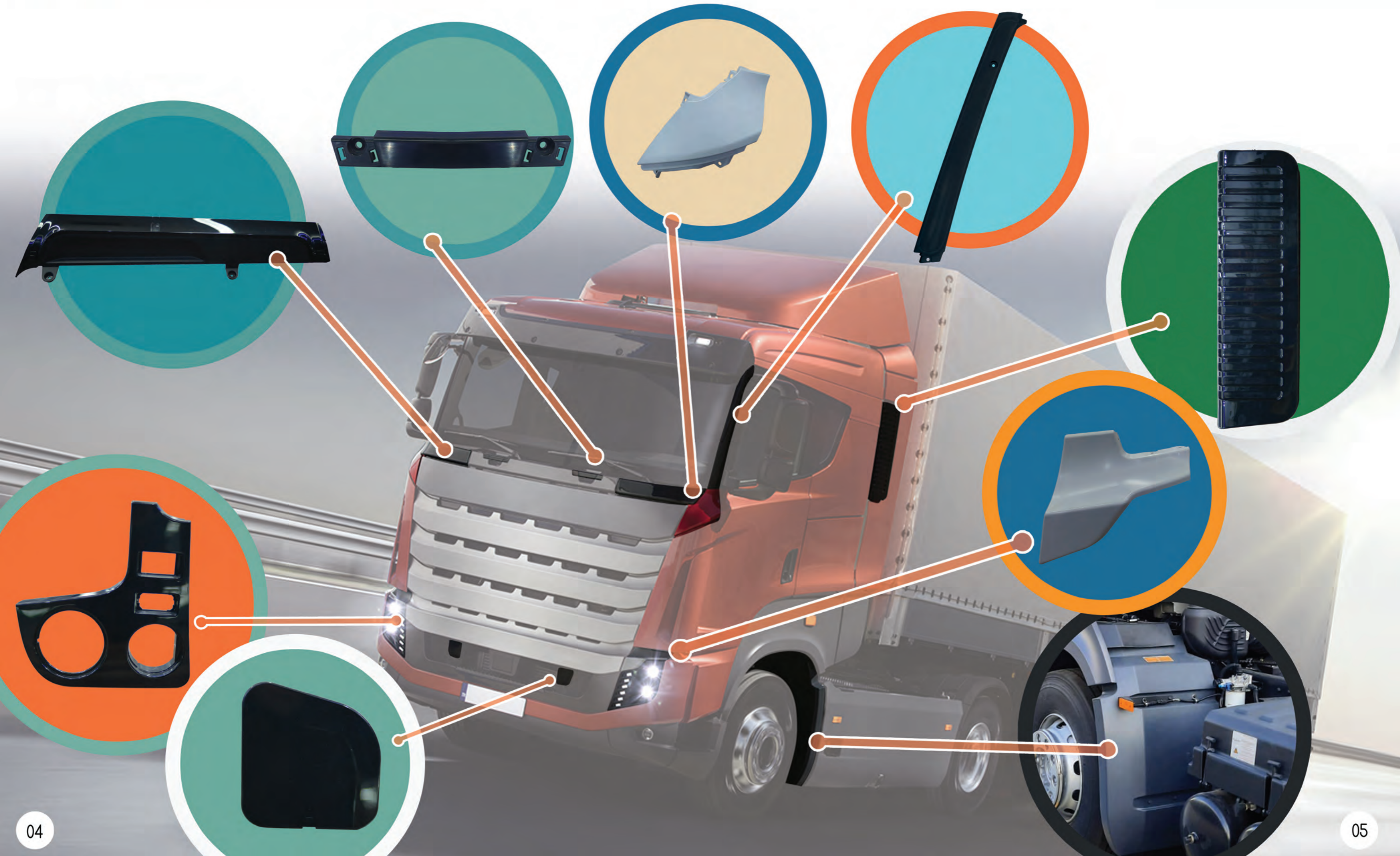


Assembly Lines & Warehouse

- 3500 m2 area
- 4 knitting machines
- Plastic injections machines
- Ultrasonic weldings

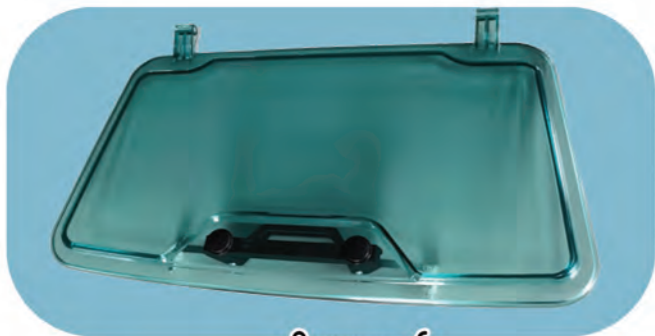


Exterior Trim Parts





Exterior Trim Parts



Sunroof



License Plate

Fender Bracket



Fender Bracket



License Plate



License Plate



Solenoid Cover



PTO Cover

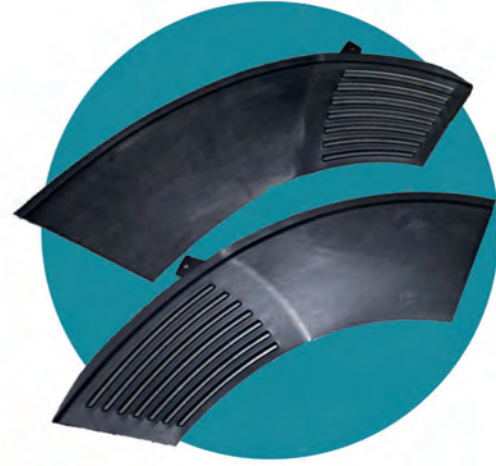




Exterior Trim Parts



SIDE PANEL

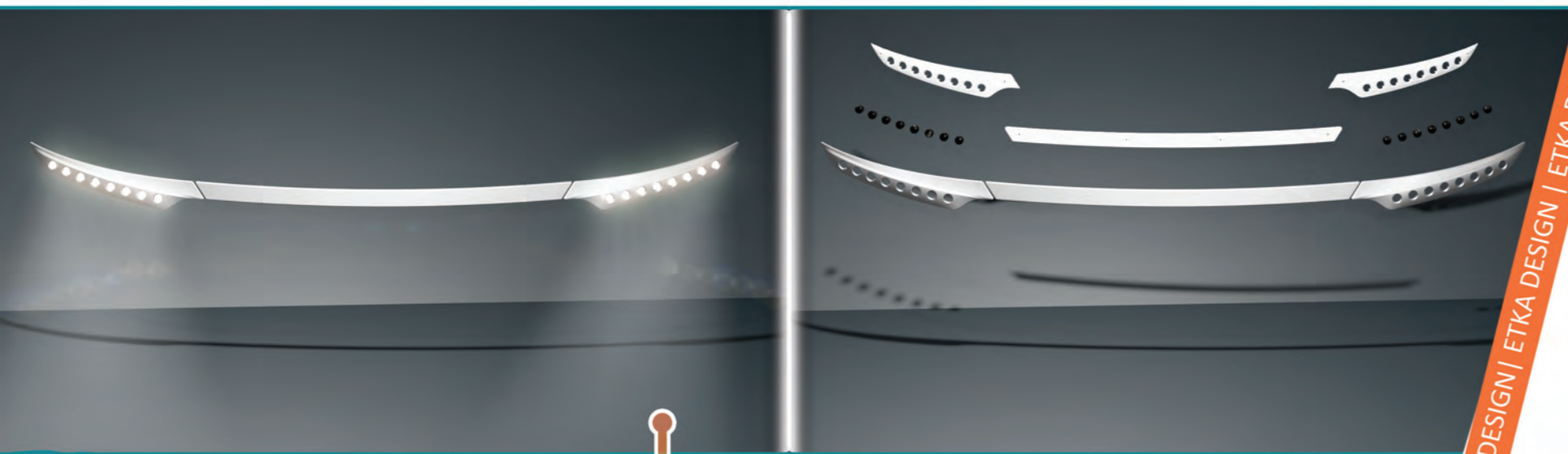


STOP LIGHT





Exterior Trim Parts



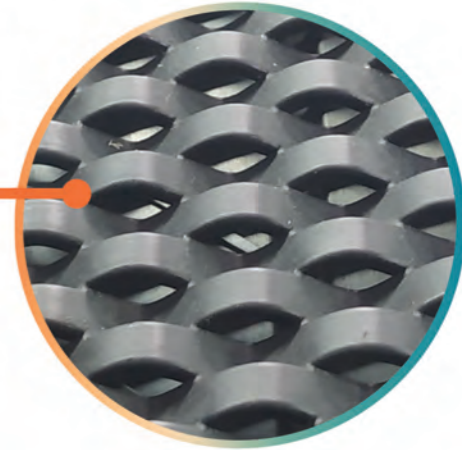
ETKA DESIGN | ETKA DESIGN | ETKA DESIGN | ETKA DESIGN | ETKA DESIGN | ETKA DESIGN | ETKA DESIGN | ETKA DESIGN | ETKA DESIGN | ETKA DESIGN

ETKA

ETKA D

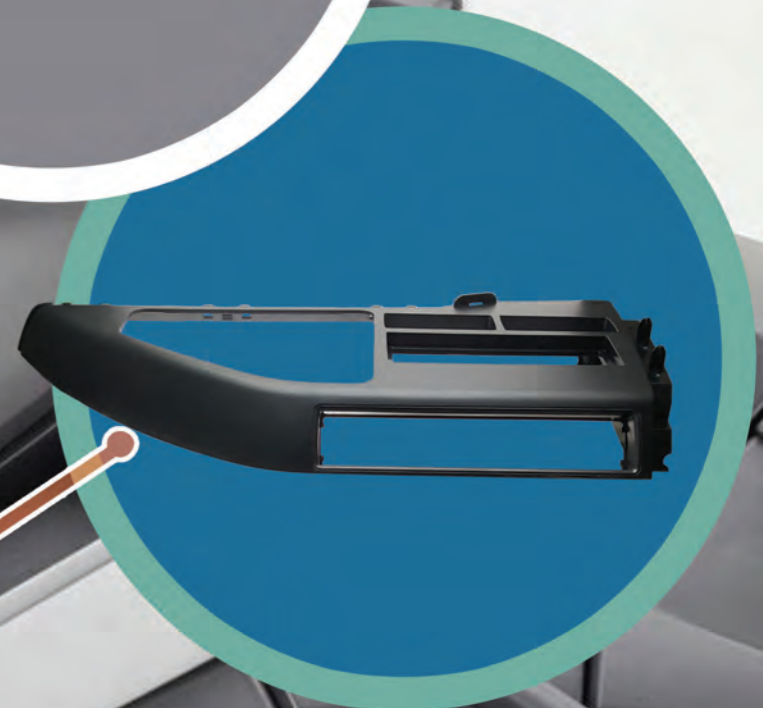


GRILLS





Interior Trim Parts





Interior Trim Parts



Dashboard

Middle Saddle Cover



Defroster



Trim Covers



Trim Covers



PTO Lever



Trim Cover





Interior Trim Parts



Dashboard Liner



Pedal Muffler



Structure



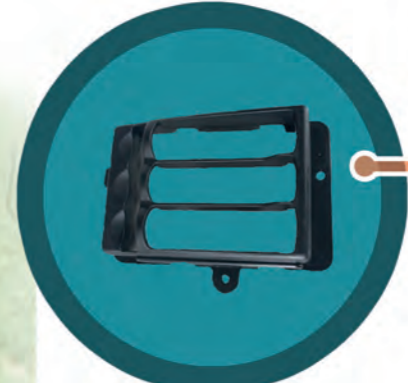
Trim



Cover



Top Trim



Spacer



Trim Support Structure





Interior Trim Parts

Trim Part

Instrument Panel

Frame



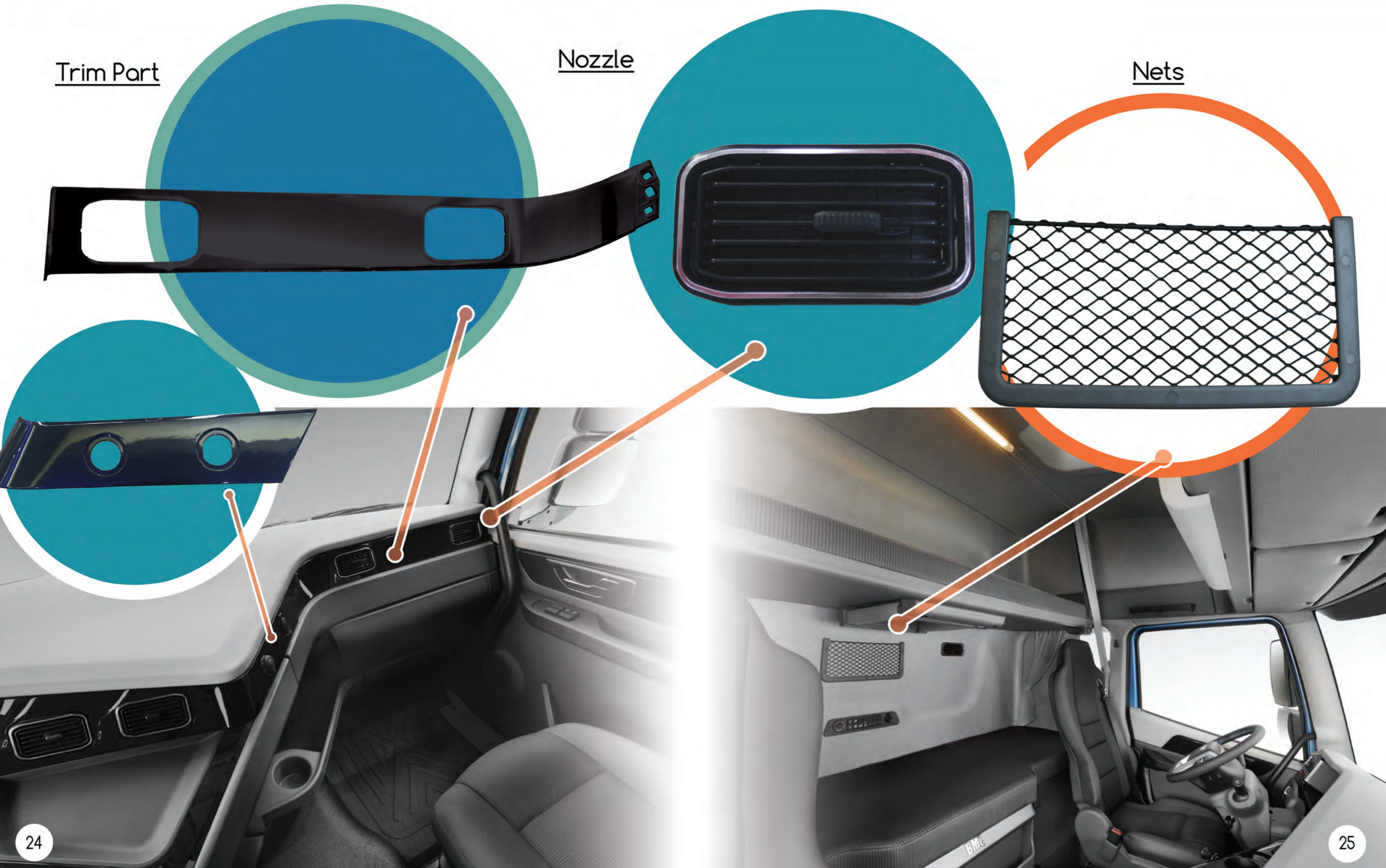


Interior Trim Parts

Trim Part

Nozzle

Nets



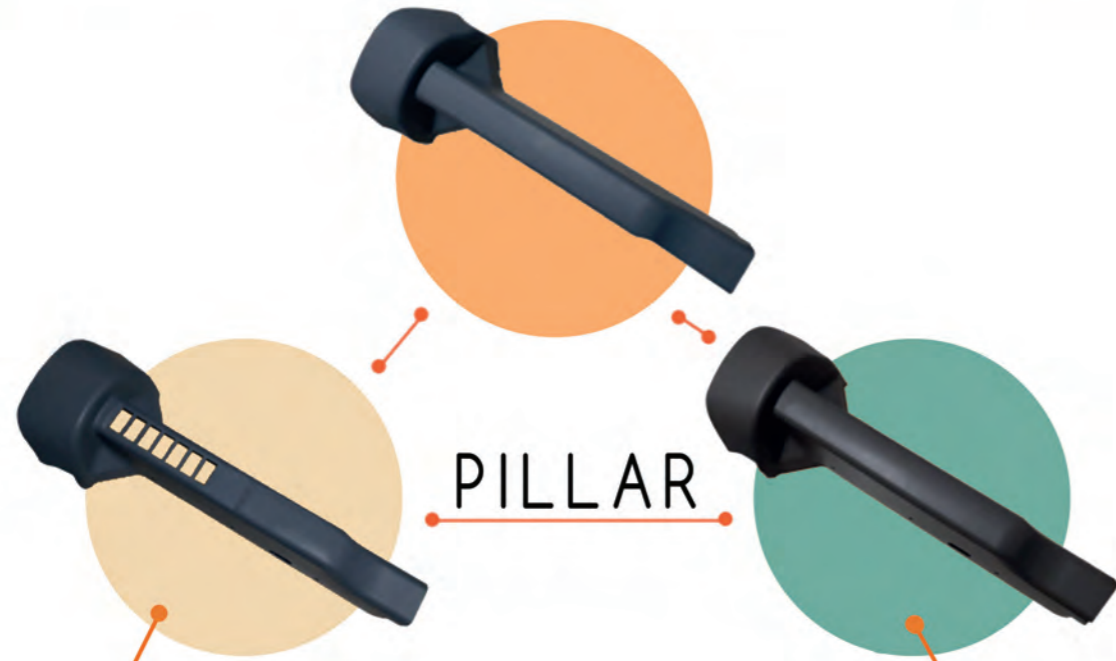


Interior Trim Parts





Interior Trim Parts



PILLAR

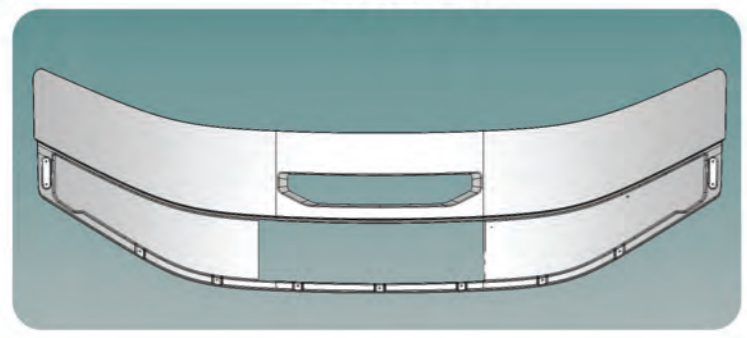


DASHBOARD

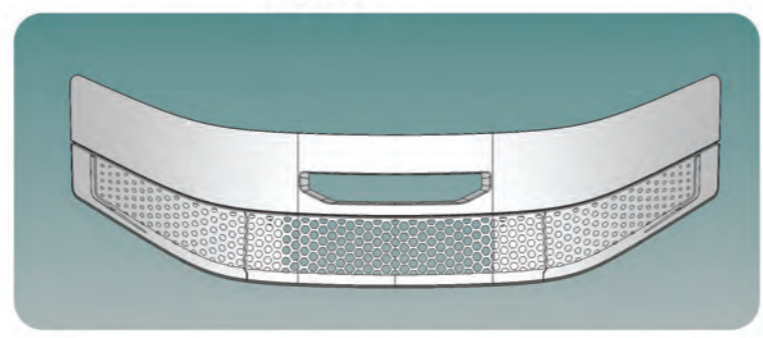




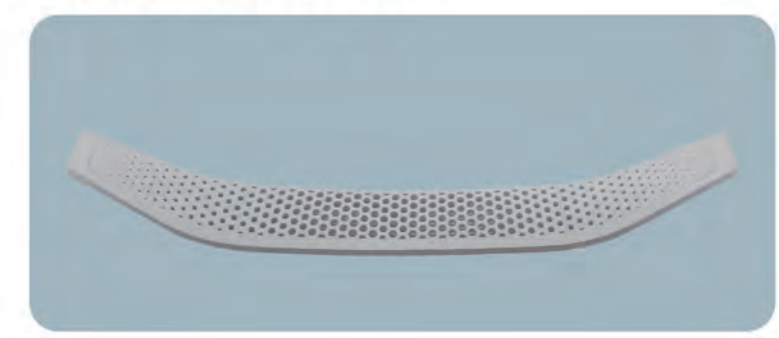
Before



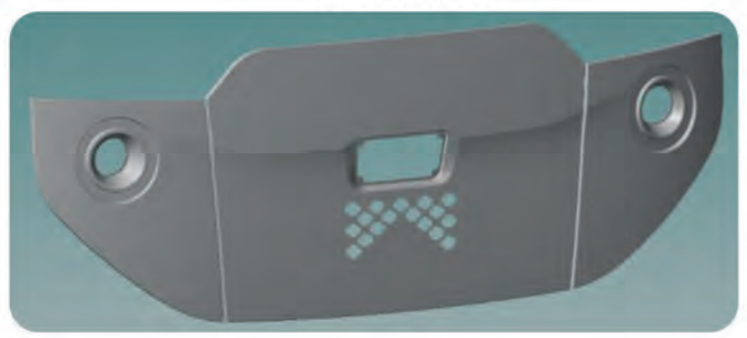
After



Front Grill



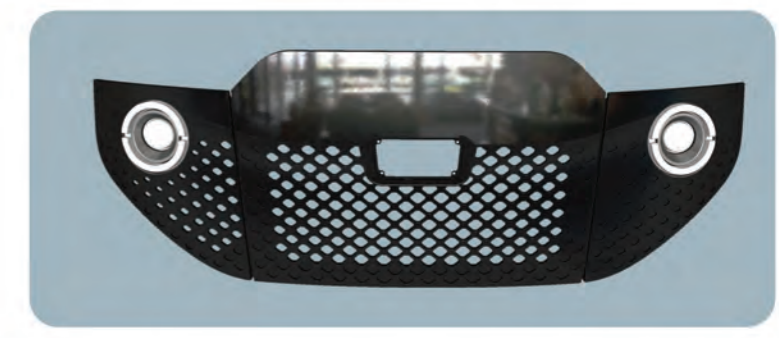
Before



After

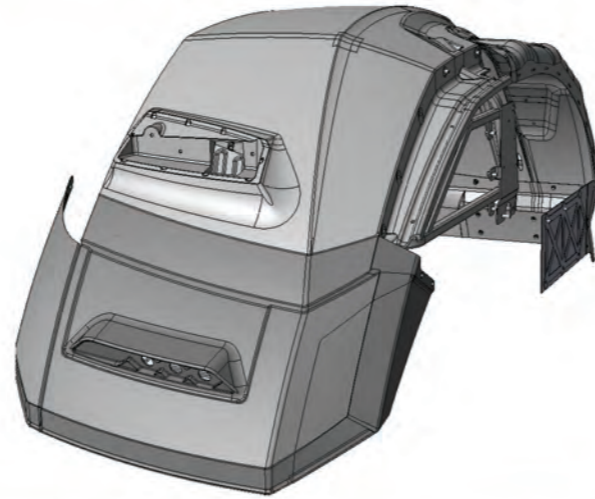
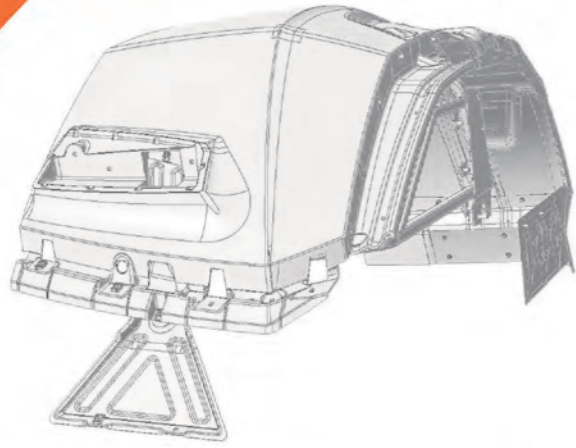


Front Grill

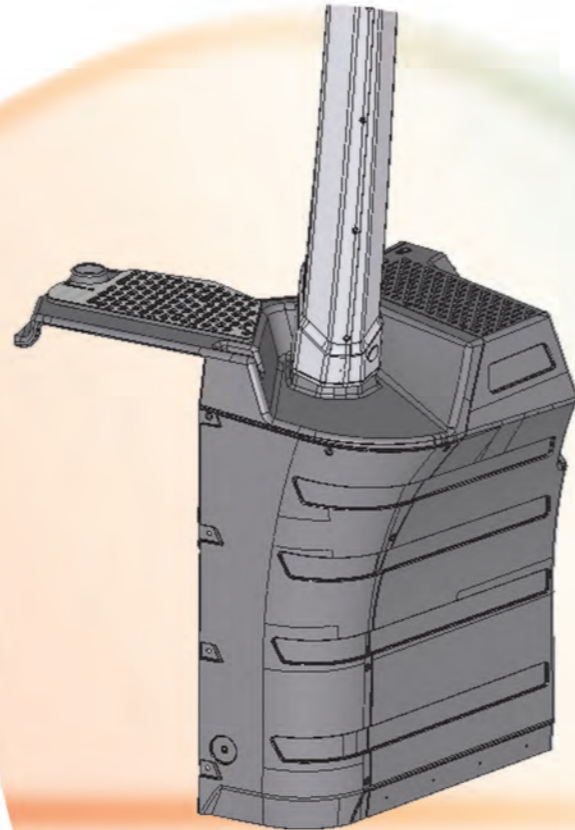
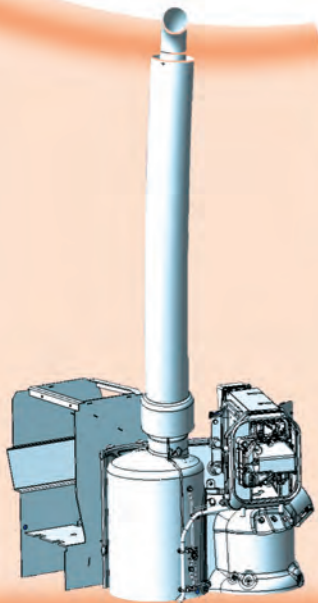




Fender

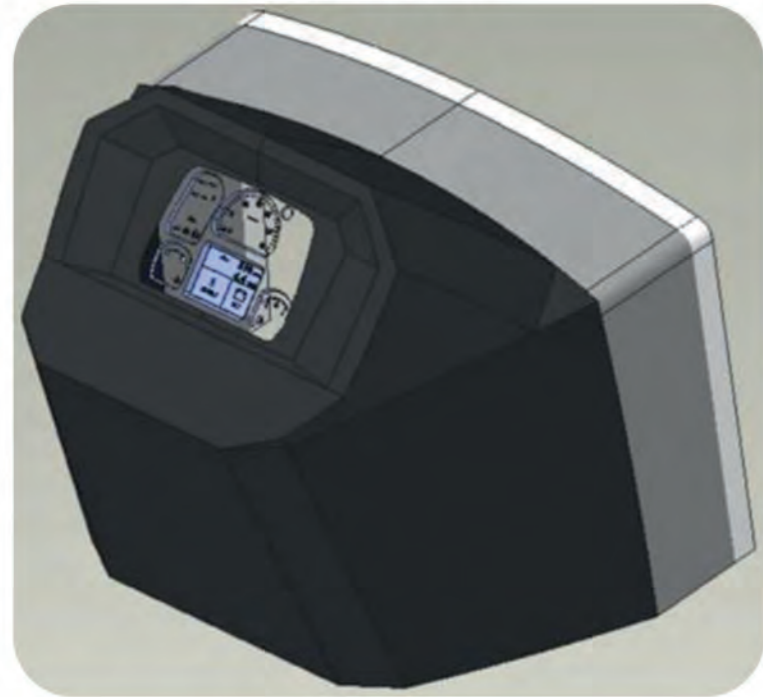


Exhaust Cover





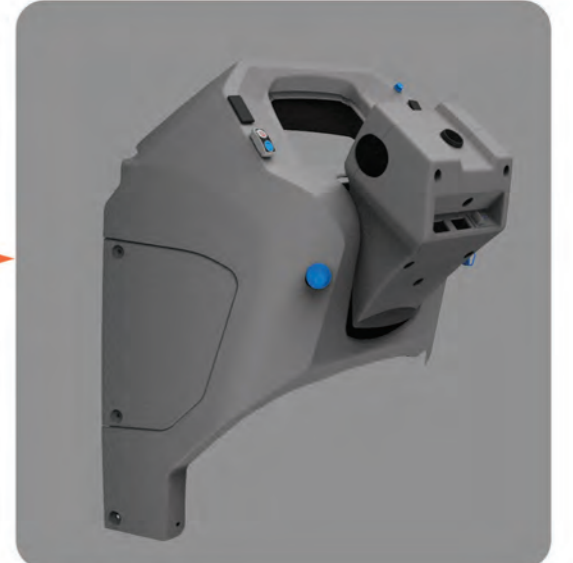
Before



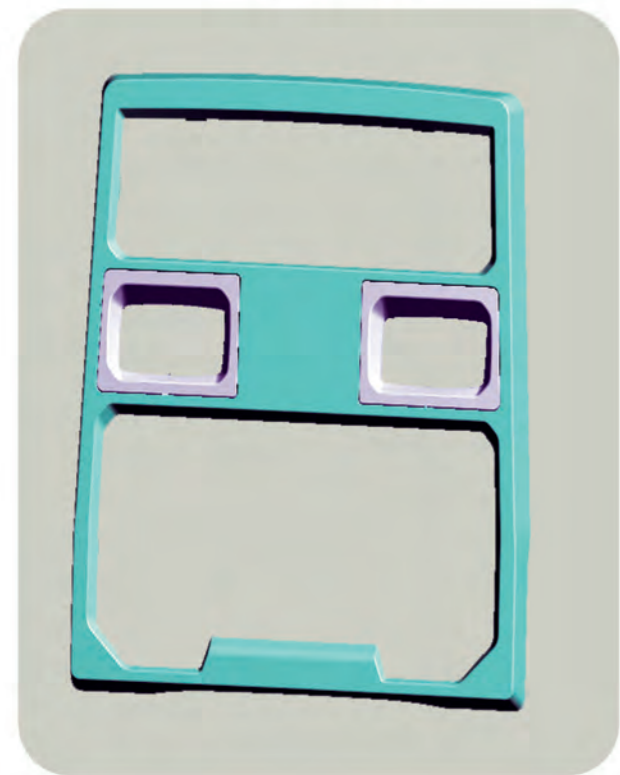
After



Dashboard



Before



After

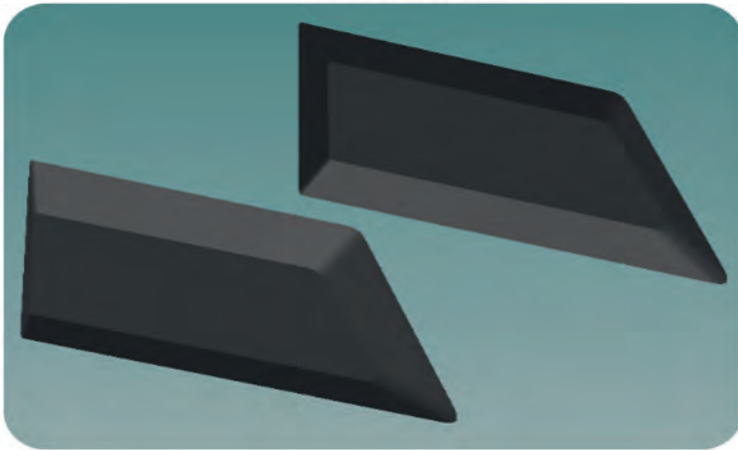


Headlight Frame





Before



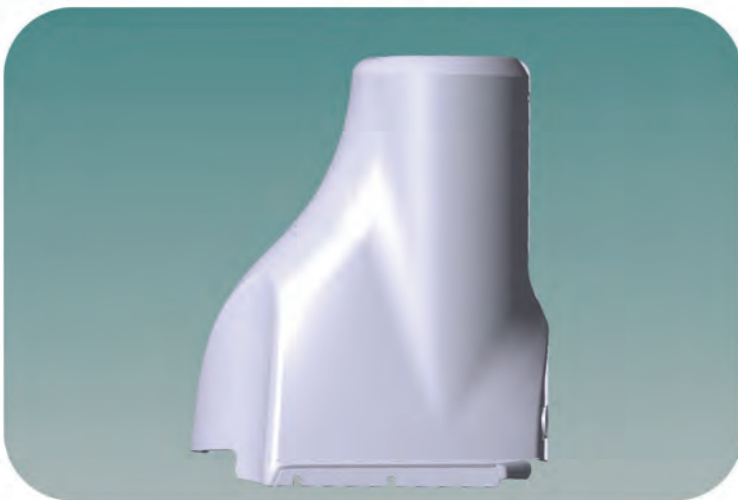
After



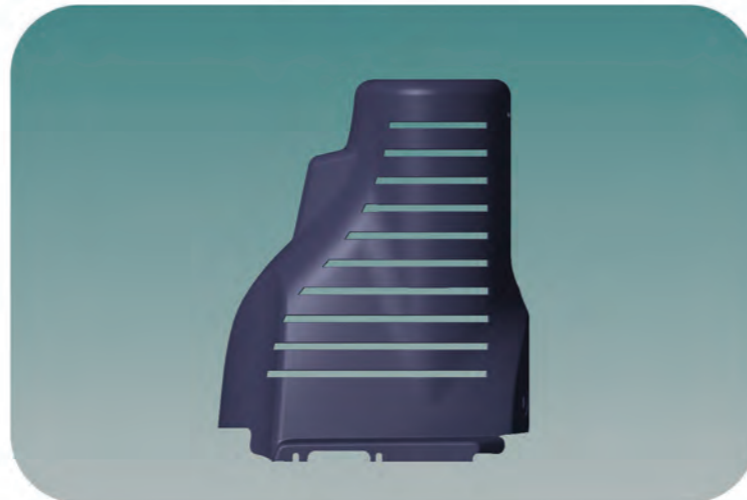
Side Grille



Before

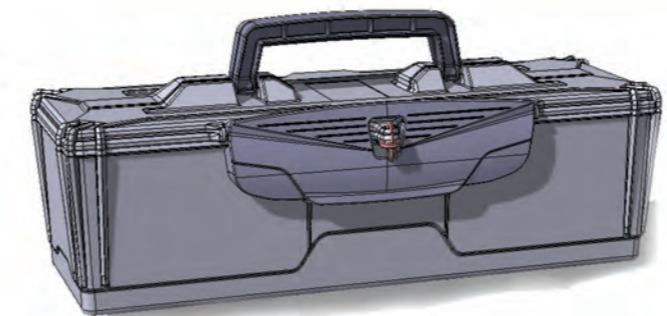
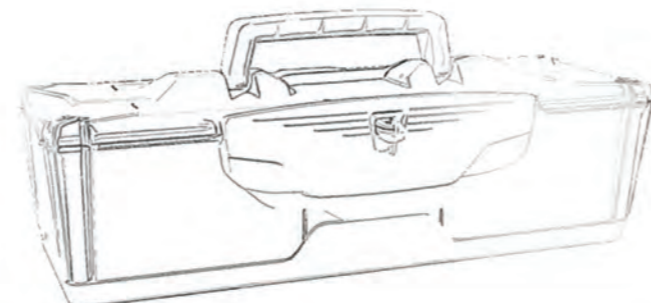
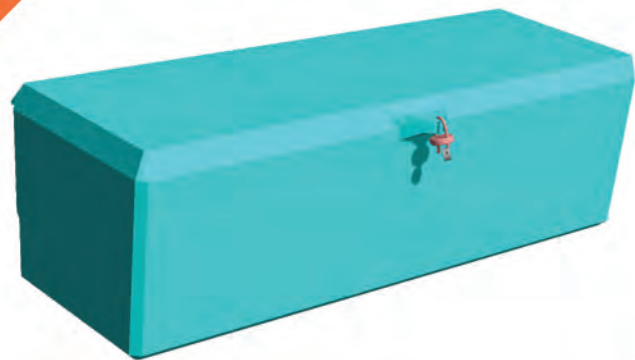


After

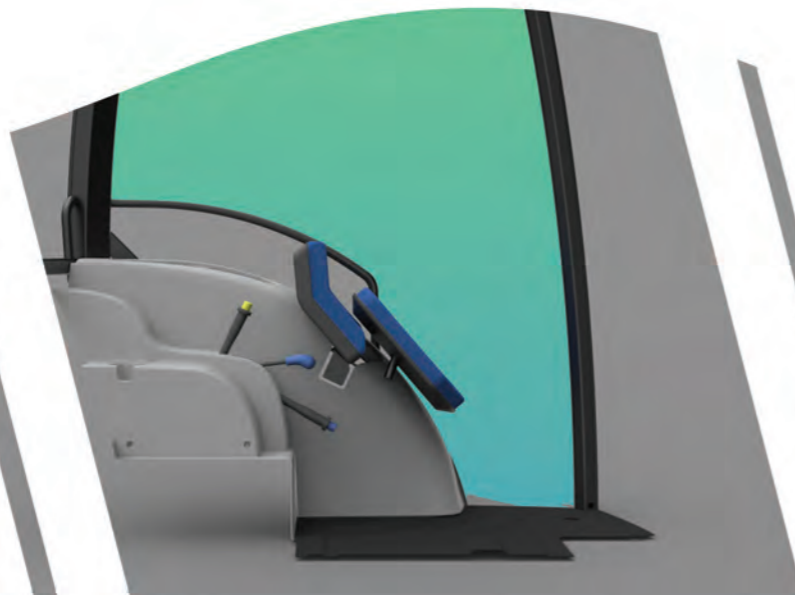
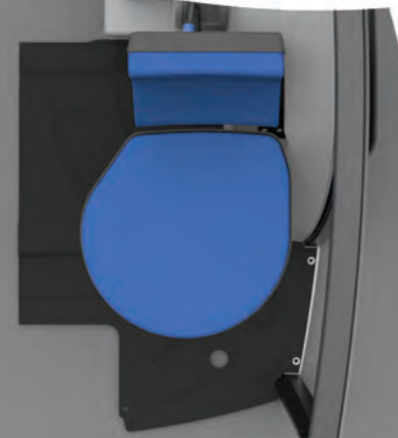


Exhaust Cover





Tool Box

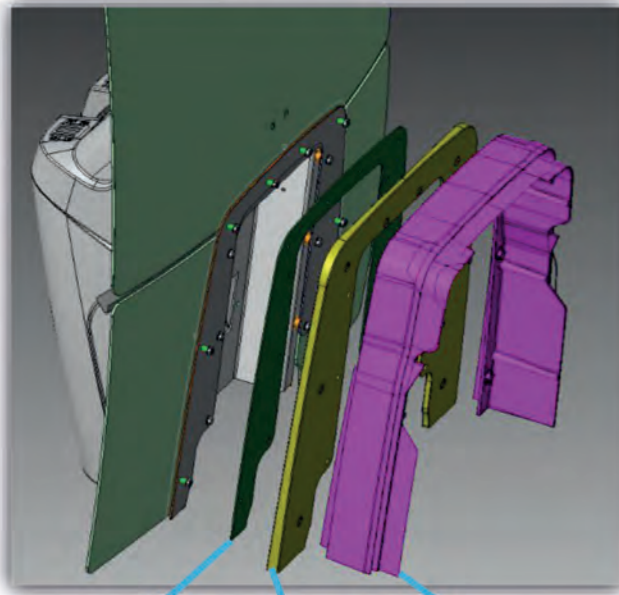


Folding Passenger Seat



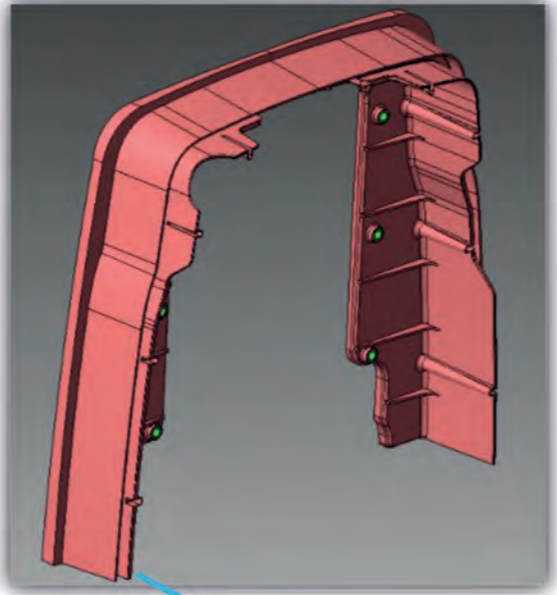
Cost Improvement Design

Before



Metal Sheet Rubber Rim

After

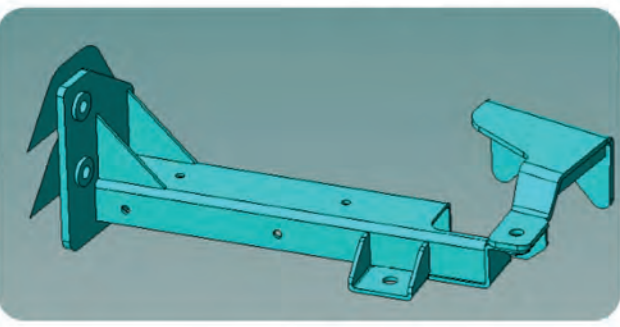


Only One Plastic Part

Spacer

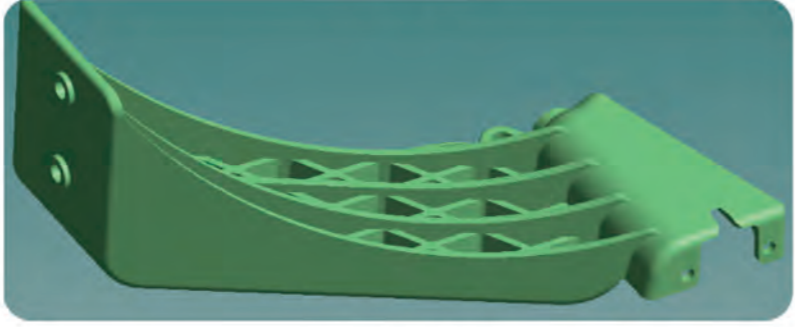


Before



Metal

After

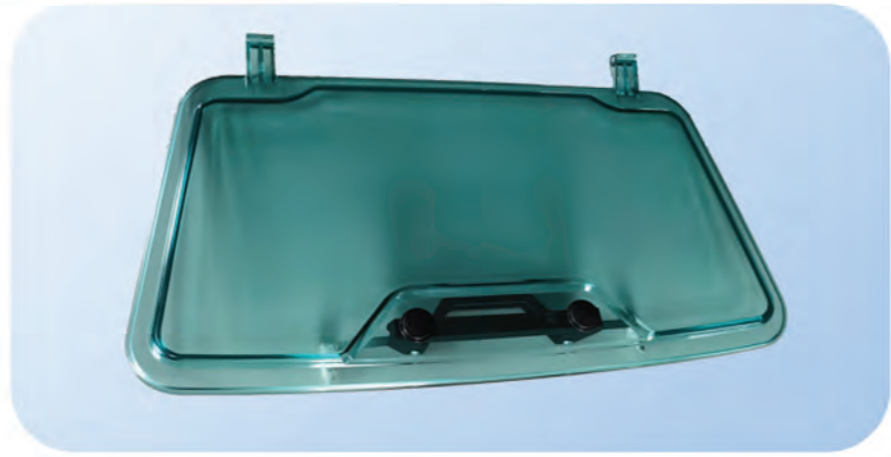


Plastic

Fender Bracket From Metal to Plastic.

Fender Bracket



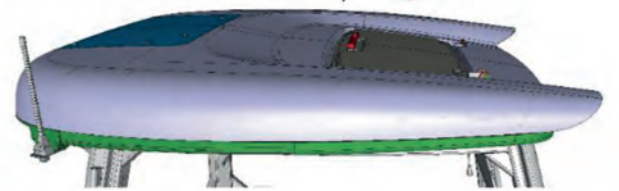
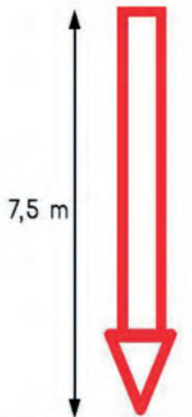


SUNROOF PARTS

Our sunroof is the first plastic sunroof in Türkiye which passed the FOPS test.



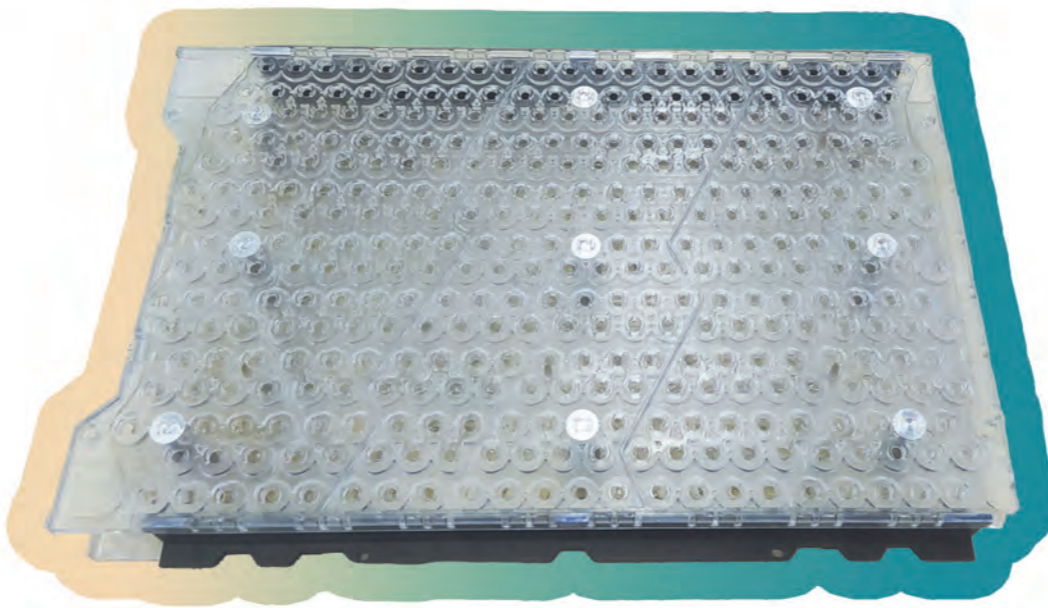
ECE R43 certified



Falling Object Protective Structures Test



• Center Console



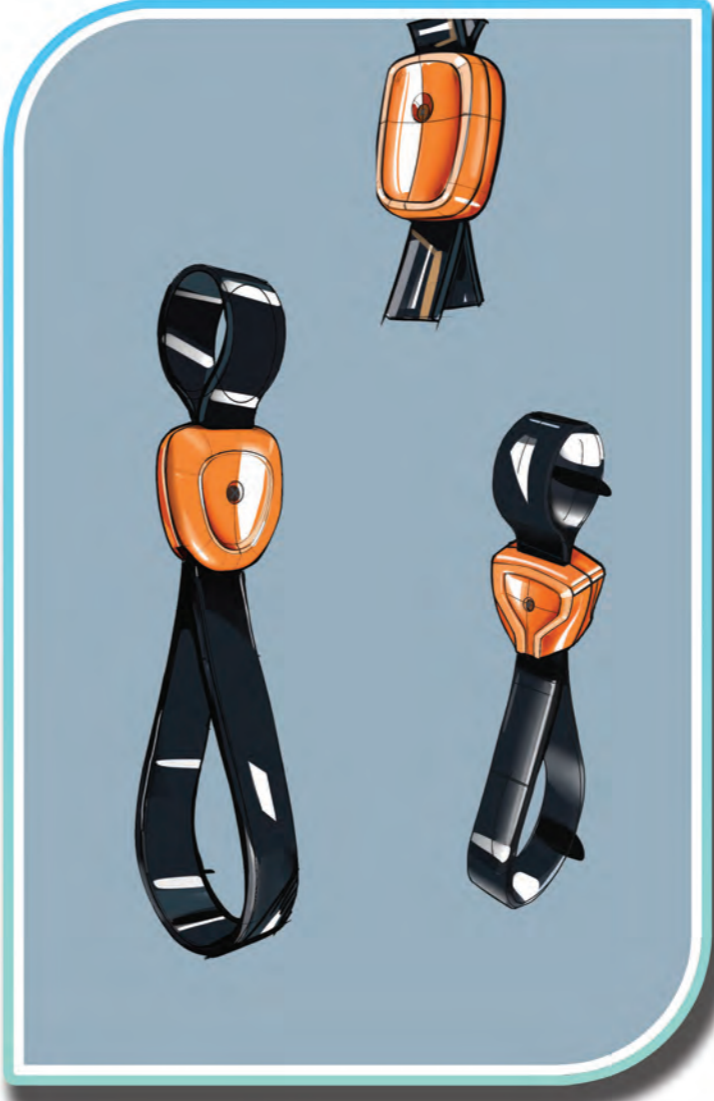
• Battery Holder



• Center Console

Product Development SOLUTIONS



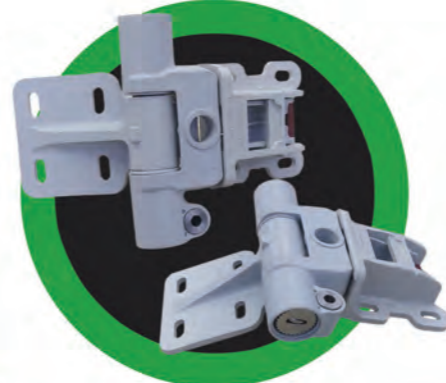


• SEAT | • HANDLE | • TRIM PARTS

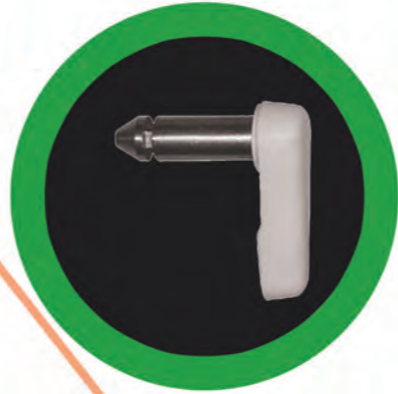




HINGE



LATCHPIN



ULP PEAR COVER



TABLE



SEAT BACKREST COVER



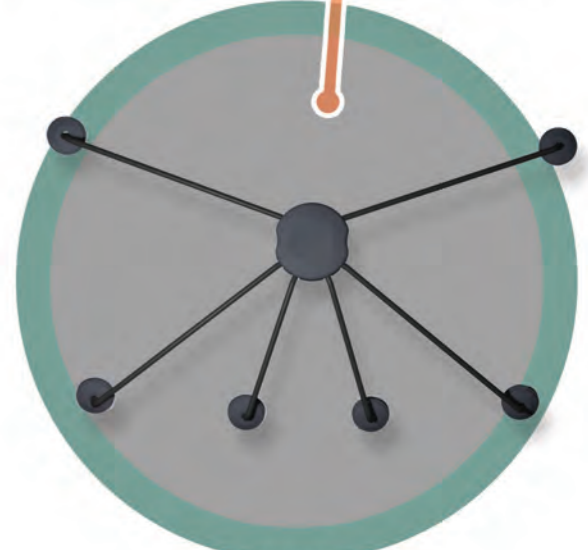
SIDE COVER



BACK COVER



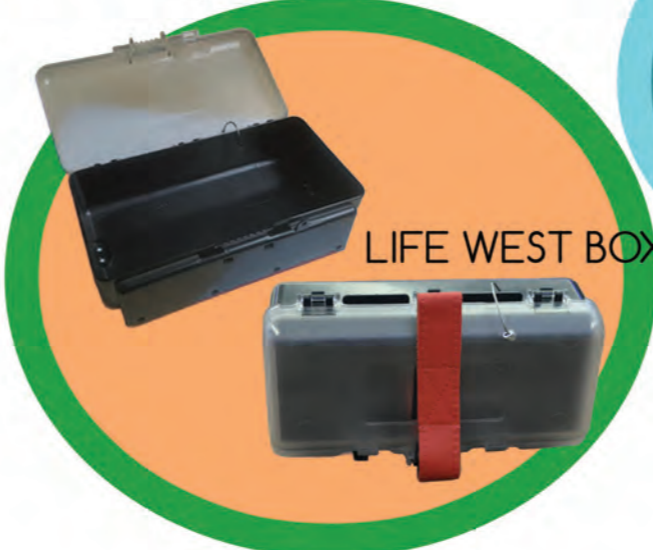
ARMREST



NETS



DISC MAIN BODY

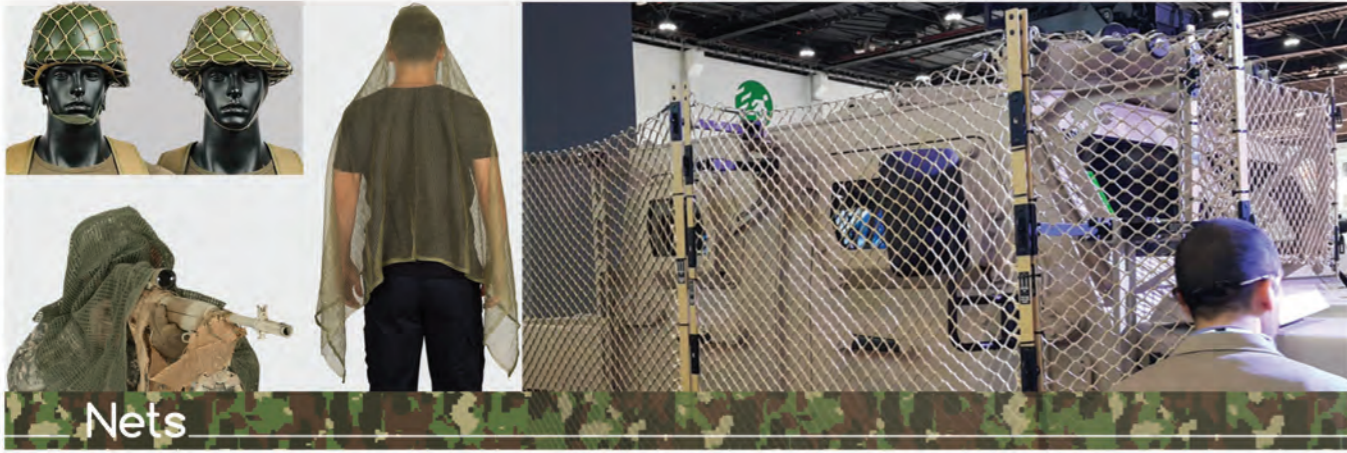


LIFE WEST BOX





Various Applications



Nets



Folding Seat



Body Shield



Hard Case





Various Applications

Filter Box



Nozzle



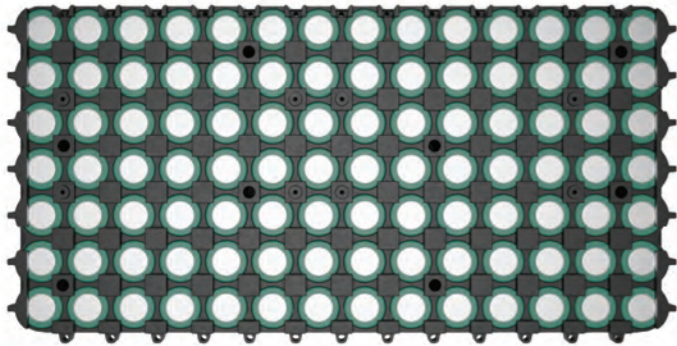
Nozzle



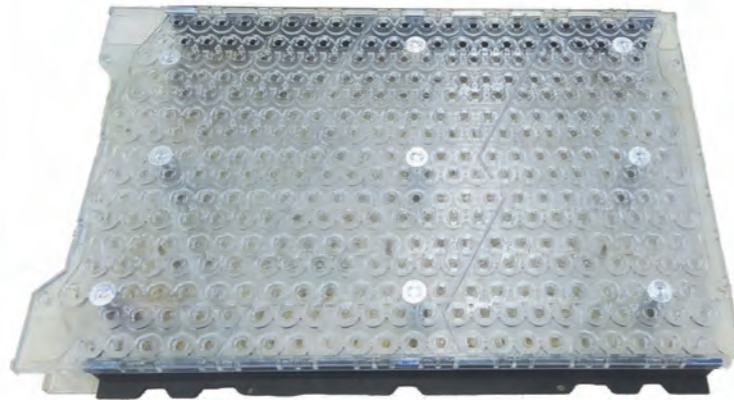
Window Handle



Battery Holder



Battery Holder



Armrest Cover



Console Rest



Cable Bracket



Air Blocker



Hand Break Trimming



Hinge





Certificates



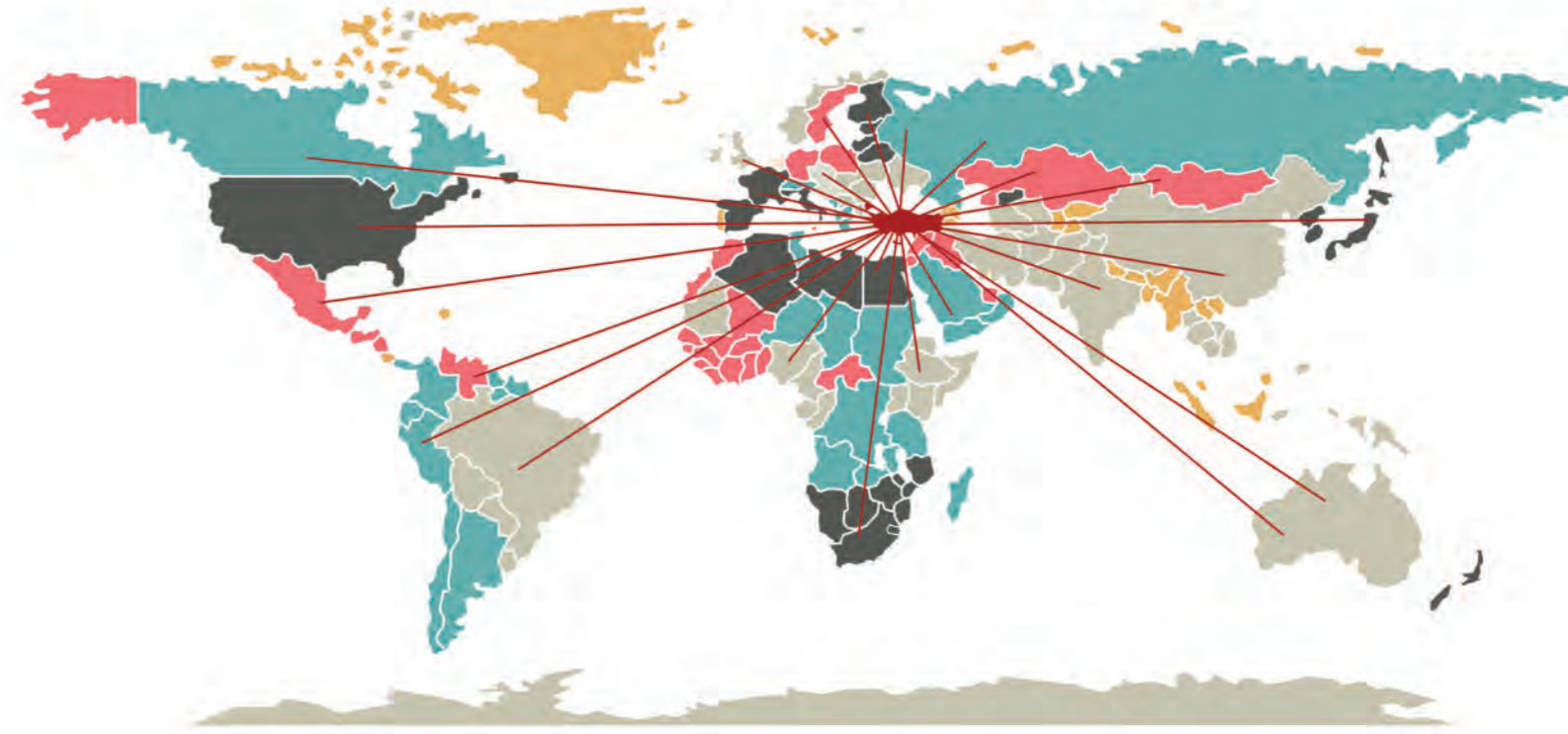
Global Service



CERTIFICATES



We are not selling to Antarctica yet.



Some of our references

